



光华管理学院
Guanghua School of Management



2014 12 8

2



-

-

()

-

-

-

-

2





200



3-5









-

1.5

12

-

-

-

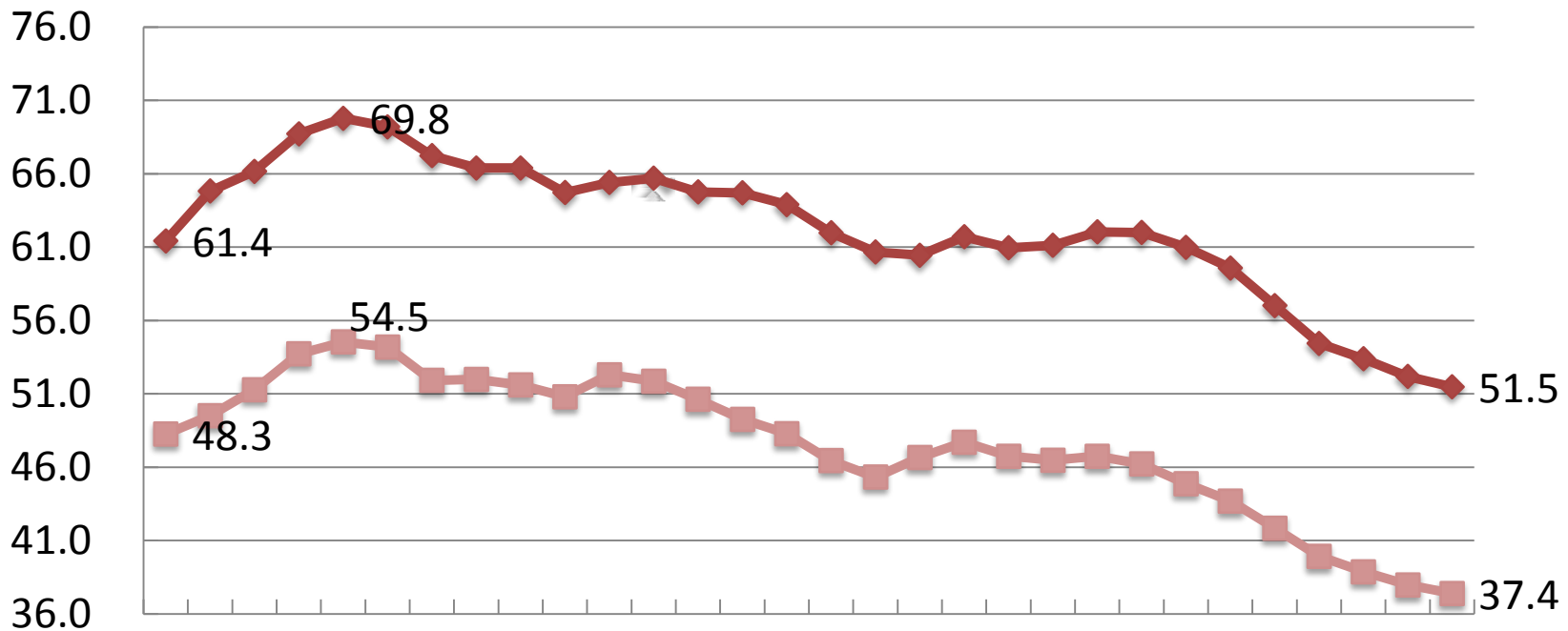
“

”

1-1. 2001-2010

	GDP			
2001	8.3	4.1	4.2	0
2002	9.1	4	4.4	0.7
2003	10	3.5	6.4	0.1
2004	10.1	3.9	5.6	0.6
2005	10.4	4	3.9	2.5
2006	11.1	4.3	4.6	2.2
2007	11.4	4.4	4.3	2.7
2008	9	4	4.2	0.8
2009	8.7	4.6	8	-3.9
2010	10.3	3.9	5.6	0.8

: 2010





- 1. “ ”
2004 5 pp.35-45 .
- 2.[] •
1997 12 pp.125-150 .
- 3. Arrow, K. and M. Kurz, (1970). *Public Investment, the Rate of Return and Optimal Fiscal Policy*. Johns Hopkins University Press.
- 4. Lucas, R. E. Jr, (2000). Inflation and Welfare. *Econometrica* 68(2), 247-274.

●

●

“

”

•

•

•

•

8

●

●

●

-
- *60%+ *40%
- 90 60

-

3

-

90



20

• 2015 1 5

• 2015 1 10

• 2015 3

• 2015 4 3

• 2015 4 10

• 2015 4 16

1

- 2015 4 17
- 2015 4 24

• 2015 4 30



